

As Baidu (BIDU) Stock Price Declined, Holder Cantillon Capital Management Trimmed Stake; Provis Management Group Upped Schwab Charles New (SCHW) Position by \$707,783; Market Value Declined

Posted by Danielle Thao on June 4, 2019 at 10:08 am



Provis Management Group Llc increased its stake in Schwab Charles Corp New (SCHW) by 145.18% based on its latest 2018Q4 regulatory filing with the SEC. Provis Management Group Llc bought 17,263 shares as the company's stock declined 0.02% while stock markets rallied. The institutional investor held 29,154 shares of the investment bankers and brokers and service company at the end of 2018Q4, valued at \$1.21 million, up from 11,891 at the end of the previous reported quarter. Provis Management Group Llc who had been investing in Schwab Charles Corp New for a number of months, seems to be bullish on the \$55.58B market cap company. The stock increased 0.05% or \$0.02 during the last trading session, reaching \$41.63. About 7.05M shares traded or 7.34% up from the average. The Charles Schwab Corporation (NYSE:SCHW) has declined 12.30% since June 4, 2018 and is downtrending. It has underperformed by 16.67% the S&P500. Some Historical SCHW News: 16/04/2018 – Charles Schwab 1Q Asset Management, Administration Fees \$851M; 16/04/2018 – CHARLES SCHWAB – CONSOLIDATED BALANCE SHEET ASSETS AT \$248 BLN AT QUARTER-END; STILL ANTICIPATE CROSSING \$250 BLN THRESHOLD IN FIRST HALF OF 2018; 09/03/2018 – Schwab Emerging Markets Equity ETF Closes Above 50D-MA; 22/03/2018 – Schwab International Equity ETF Closes Below 200-Day MA; 25/04/2018 – Charles Schwab CEO Says Won't Be Leader in Near Term Prices Cuts (Video); 29/03/2018 – Schwab U.S. Aggregate Bond ETF Closes Above 50-D-MA: Technicals; 25/04/2018 – Taking Charles Schwab to Europe 'Unlikely,' CEO Says (Video); 14/03/2018 – Charles Schwab Febuary Core Net New Assets \$21.3; 16/04/2018 – Schwab Reports Record Quarterly Net Income of \$783 Million, Up 39%; 04/04/2018 – Markets Remaining Calm in 'Trade Battle,' Says Schwab's Aguilar (Video)

Cantillon Capital Management Llc decreased its stake in Baidu Inc (BIDU) by 44.26% based on its latest 2018Q4 regulatory filing with the SEC. Cantillon Capital Management Llc sold 679,630 shares as the company's stock declined 14.60% while stock markets rallied. The hedge fund held 855,743 shares of the technology company at the end of 2018Q4, valued at \$135.72 million, down from 1.54 million at the end of the previous reported quarter. Cantillon Capital Management Llc who had been investing in Baidu Inc for a number of months, seems to be less bullish on the \$37.73B market cap company. The stock decreased 2.02% or \$2.22 during the last trading session, reaching \$107.78. About 5.74M shares traded or 41.00% up from the average. Baidu, Inc. (NASDAQ:BIDU) has declined 35.57% since June 4, 2018 and is downtrending. It has underperformed by 39.94% the S&P500. Some Historical BIDU News: 19/03/2018 – ADRs End Lower; Baidu, Alibaba, BP Trade Actively; 29/04/2018 – Baidu Enters Into Definitive Agreements to Divest Its Fincl Services Business; 17/04/2018 – Caixin: Pear Video Secures Funding From Tencent, Baidu; 21/05/2018 – BAIDU INC – UPON COMPLETION OF TRANSACTION, GLOBAL DU BUSINESS IS EXPECTED TO BE DECONSOLIDATED FROM BAIDU'S CONSOLIDATED FINANCIAL STATEMENTS; 19/03/2018 – Baidu Waimai Chairman Gong leaves, third high-level departure since Ele.me's acquisition, sources say; 09/05/2018 – Candriam Adds Ecopetrol, Exits SQM, Cuts Baidu: 13F; 26/04/2018 – BAIDU – RMB 41.2 BLN RELATED WITH CO'S FINANCIAL SERVICE BUSINESS WERE RECLASSIFIED TO ASSETS, LIABILITIES HELD FOR SALE ON BALANCE SHEET AS OF MARCH 31; 30/04/2018 – Insurance Jmt: China's Baidu Selling Majority Stake in Fintechs; Could Target Insurance; 10/04/2018 – Fitch Rates Baidu's USD Notes Final 'A'; 29/04/2018 – Baidu: Du Xiaoman Will Raise Approximately \$1.9B

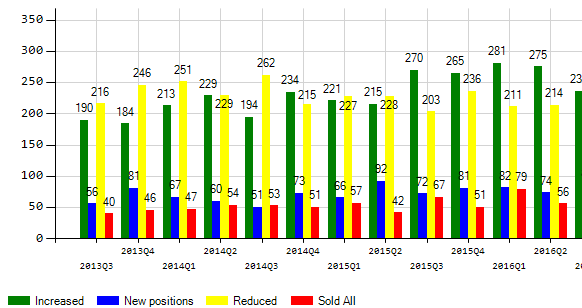
More notable recent Baidu, Inc. (NASDAQ:BIDU) news were published by: Nasdaq.com which released: "Has Amazon Leached All It Can From the Cloud? – Nasdaq" on May 31, 2019, also Nasdaq.com with their article: "Technology Sector Update for 05/17/2019: NTEs,AMAT,BIDU – Nasdaq" published on May 17, 2019, Nasdaq.com published: "Tech Stock News: Shares of Pinterest and Baidu Fall – Nasdaq" on May 18, 2019. More interesting news about Baidu, Inc. (NASDAQ:BIDU) were released by: Investorplace.com and their article: "If You Can Stomach the Drops, JD Stock Roller Coaster Is Worth Riding – Investorplace.com" published on May 31, 2019 as well as Fool.com's news article titled: "Why Deere, UP Fintech Holding, and Baidu Slumped Today – The Motley Fool" with publication date: May 17, 2019.

Cantillon Capital Management Llc, which manages about \$12.49B and \$8.29B US Long portfolio, upped its stake in Thermo Fisher Scientific Inc (NYSE:TMO) by 489,081 shares to 1.02M shares, valued at \$229.37 million in 2018Q4, according to the filing. It also increased its holding in Cme Group Inc (NASDAQ:CME) by 13,400 shares in the quarter, for a total of 1.94M shares, and has risen its stake in Zoetis Inc (NYSE:ZTS).

Since December 24, 2018, it had 2 insider buys, and 2 insider sales for \$6.97 million activity. Craig Jonathan M. sold \$162,946 worth of stock or 3,739 shares. SCHWAB CHARLES R also sold \$11.76M worth of The Charles Schwab Corporation (NYSE:SCHW) on Friday, February 1. 2,500 shares were bought by Ruffel Charles A., worth \$115,250 on Friday, May 3.

Provis Management Group Llc, which manages about \$1.14 billion and \$632.67 million US Long portfolio, decreased its stake in Schwab Strategic Tr (SCHA) by 18,056 shares to 119,058 shares, valued at \$7.22M in 2018Q4, according to the filing. It also reduced its holding in Lowes Cos Inc (NYSE:LOW) by 3,583 shares in the quarter, leaving it with 57,753 shares, and cut its stake in Wisdomtree Tr (DGS).

Schwab Charles Corp Institutional Positions



Receive News & Ratings Via Email - Enter your email address below to receive a concise daily summary of the latest news and analysts' ratings with our FREE daily email newsletter.

\$

KEEP CALM
and
Trade Penny Stocks

Sign Up Today!

Chesapeake Energy Corporation (CHK) Stock Update



Boeing Co To Offer Aircraft Financing If Ex-Im Bank Shuts



Following South32 Spinoff, BHP Billiton Limited Still Left With \$2.8 Billion Of Reject Assets

#1 Cannabis Stock for 2019

FREE REPORT